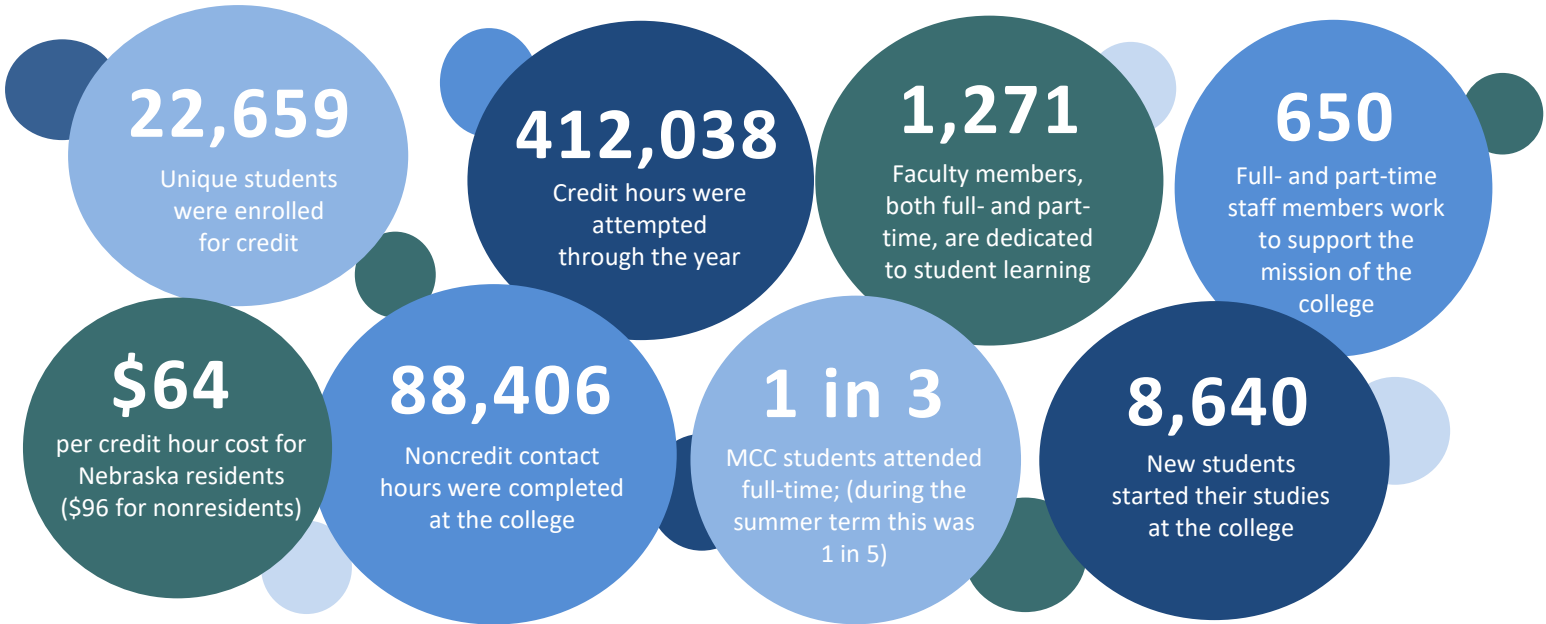


# MCC Facts at a Glance:

A snapshot of annual data for the year 2019-20

Metropolitan Community College delivers relevant, student-centered education to a diverse community of learners in Douglas, Sarpy, Washington, and Dodge Counties in Nebraska. This year at MCC:

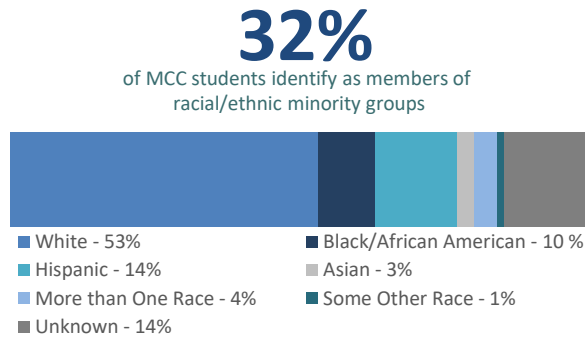


MCC students represent a diverse population of learners, with a broad range of backgrounds and educational and career interests.

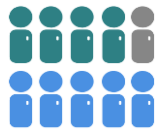
**26**  
is the average age of an MCC student; most between 16 and 35.



**55%**  
Slightly more than half of MCC's students are female



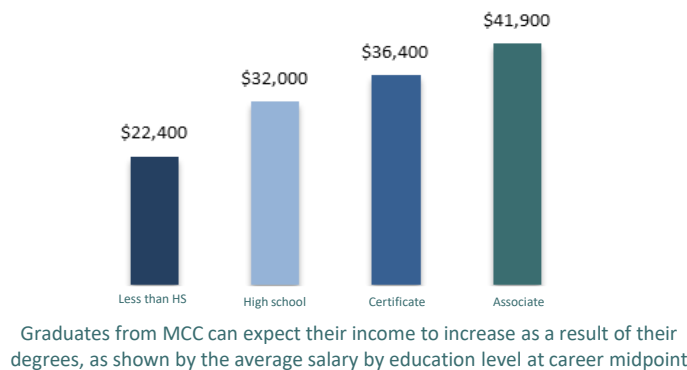
**49%**  
Almost half of students were in academic transfer programs, close to 4 of 10 (39%) were in career/technical programs; some (12%) were undecided



The long-term economic effect of completing a degree is unquestionable, and includes an impact on the students as well as the community.



**1,546**  
Graduates received degrees at MCC in 2019-20



**\$396,000**  
Approximate increase in earnings over a career that an MCC graduate can expect, compared to a high school graduate



Metropolitan Community College  
2019/20 Annual Data Notebook

**Enrollment (data is based on the section census date)**

Credit courses are courses that apply to a degree, certificate, or specialist diploma awarded by Metropolitan Community College or meet prerequisites for college level classes. (Credit for developmental courses does not apply toward a degree, but satisfies prerequisites for courses in degree programs.)  
Noncredit refers to programs and courses that are not awarded college academic credit.

Unduplicated Headcount (by term) counts each student only once during the term. If a student enrolled in more than one term during the year they are counted for each term they are enrolled.  
Duplicated Headcount counts each student for every course taken. Seatcount is a term also associated with duplicated headcount.

**UNDUPLICATED HEADCOUNT (by term)**

Location	2019-20		2018-19		2017-18		2016-17		2015-16	
	Headcount	% Change	Headcount	% Change	Headcount	% Change	Headcount	% Change	Headcount	% Change
Fort Omaha	7,504	-12.4%	8,566	10.4%	7,756	34.3%	5,777	8.6%	5,321	-25.8%
South Omaha	8,018	-22.3%	10,318	-10.4%	11,510	-12.3%	13,122	7.8%	12,173	-7.6%
Elkhorn Valley	5,144	-15.6%	6,097	-3.3%	6,307	-11.1%	7,097	7.1%	6,626	-21.5%
Sarpy	1,668	-24.6%	2,212	-11.7%	2,506	-11.4%	2,830	-0.8%	2,853	0.9%
Fremont Area Center	481	-20.4%	604	9.2%	553	-12.5%	632	-5.5%	669	-27.6%
ATC	863	-0.7%	869	1.9%	853	-9.4%	941	22.5%	768	-10.1%
WCC	0	N/A	0	N/A	0	N/A	0	-100.0%	24	-4.0%
MCC Express	0	N/A	0	N/A	0	N/A	0	-100.0%	13	-76.4%
Bellevue East/West/University	44	-22.8%	57	-21.9%	73	15.9%	63	-23.2%	82	-1.2%
Offutt	0	N/A	0	-100.0%	3	-70.0%	10	-44.4%	18	38.5%
Online	14,885	3.1%	14,436	3.9%	13,893	-3.8%	14,439	16.2%	12,421	-12.3%
Other Locations	5,767	13.6%	5,078	8.6%	4,677	26.0%	3,711	12.4%	3,301	142.7%
<b>TOTAL CREDIT</b>	<b>44,374</b>	<b>-8.0%</b>	<b>48,237</b>	<b>0.2%</b>	<b>48,131</b>	<b>-1.0%</b>	<b>48,622</b>	<b>0.5%</b>	<b>48,395</b>	<b>-1.4%</b>
Noncredit	4,106	-67.0%	12,448	2.4%	12,152	-5.0%	11,419	-10.8%	12,797	35.5%
<b>GRAND TOTAL</b>	<b>48,480</b>	<b>-20.1%</b>	<b>60,685</b>	<b>0.7%</b>	<b>60,283</b>	<b>-1.5%</b>	<b>60,041</b>	<b>-1.9%</b>	<b>61,192</b>	<b>4.5%</b>

**DUPLICATED HEADCOUNT**

Location	2019-20		2018-19		2017-18		2016-17		2015-16	
	Headcount	% Change	Headcount	% Change	Headcount	% Change	Headcount	% Change	Headcount	% Change
Fort Omaha	14,754	-14.3%	17,216	27.9%	16,056	45.3%	13,457	21.8%	11,051	-23.0%
South Omaha	16,290	-22.6%	21,035	-26.9%	23,264	-7.3%	28,768	14.6%	25,102	-12.9%
Elkhorn Valley	10,897	-14.4%	12,725	-21.2%	13,176	-4.0%	16,147	17.7%	13,721	-13.5%
Sarpy	3,432	-24.4%	4,539	-20.3%	5,118	-10.6%	5,693	-0.5%	5,724	-19.1%
Fremont Area Center	690	-24.9%	919	-18.7%	880	-28.7%	1,131	-8.3%	1,234	-28.4%
ATC	2,102	-4.7%	2,206	-4.7%	2,009	-4.8%	2,316	9.8%	2,110	-11.6%
WCC	0	N/A	0	N/A	0	-100.0%	0	-100.0%	28	-49.1%
MCC Express	0	N/A	0	N/A	0	-100.0%	0	-100.0%	20	-71.8%
Bellevue East/West/University	60	-3.2%	62	-7.5%	85	-5.6%	67	-25.6%	90	-1.1%
Offutt	0	N/A	0	-100.0%	4	-81.8%	11	-60.0%	22	15.8%
Online	28,321	5.2%	26,923	1.7%	26,478	14.9%	26,473	14.9%	23,044	-15.8%
Other Locations	11,115	17.3%	9,474	38.3%	8,358	45.0%	6,850	18.8%	5,765	110.1%
<b>TOTAL CREDIT</b>	<b>87,661</b>	<b>-7.8%</b>	<b>95,099</b>	<b>-5.8%</b>	<b>95,428</b>	<b>-0.4%</b>	<b>100,913</b>	<b>5.3%</b>	<b>95,800</b>	<b>-4.3%</b>
Noncredit	5,954	-74.0%	22,927	4.5%	25,480	32.8%	21,934	14.3%	19,190	5.5%
<b>GRAND TOTAL</b>	<b>93,615</b>	<b>-20.7%</b>	<b>118,026</b>	<b>-3.9%</b>	<b>120,908</b>	<b>12.9%</b>	<b>122,847</b>	<b>14.7%</b>	<b>107,101</b>	<b>-9.4%</b>

Metropolitan Community College  
2019/20 Annual Data Notebook

**Credit/Contact Hours**

*Credit Hour* is the unit used in giving credit for a course and usually determines the number of hours per week the student is in class.  
*Contact Hour* refers to the amount of time a noncredit student is in the classroom.

**CREDIT/CONTACT HOURS**

Location	2019-20		2018-19		2017-18		2016-17		2015-16	
	Hours	% Change	Hours	% Change	Hours	% Change	Hours	% Change	Hours	% Change
Fort Omaha	69,913.00	-13.3%	80,604.00	8.1%	74,547.50	36.5%	54,616.50	1.6%	53,734.00	-14.3%
South Omaha	78,186.50	-22.1%	100,333.00	-8.9%	110,087.50	-12.8%	126,203.50	0.8%	125,211.50	-6.3%
Elkhorn Valley	51,082.00	-14.2%	59,551.50	-3.1%	61,482.50	-11.9%	69,803.50	-0.5%	70,160.00	-5.3%
Sarpy	15,712.50	-25.2%	20,995.50	-11.1%	23,621.00	-10.5%	26,404.50	-8.9%	28,969.00	-11.4%
Fremont Area Center	3,169.50	-23.5%	4,142.00	5.5%	3,924.50	-18.5%	4,813.00	-20.0%	6,014.50	-24.8%
ATC	9,704.50	-6.4%	10,367.00	7.2%	9,674.00	-10.5%	10,812.50	7.5%	10,057.50	10.1%
WCC	0.00	N/A	0.00	N/A	0.00	N/A	0.00	-100.0%	102.50	-54.2%
MCC Express	0.00	N/A	0.00	N/A	0.00	N/A	0.00	-100.0%	117.00	-63.4%
Bellevue East/West/University	284.00	-0.9%	286.50	-32.7%	425.50	25.0%	340.50	-14.3%	397.50	-11.5%
Offutt	0.00	N/A	0.00	-100.0%	18.00	-63.6%	49.50	-50.0%	99.00	15.8%
Online	129,614.50	5.4%	123,005.50	1.6%	121,116.50	-0.1%	121,186.00	2.0%	118,752.50	-5.2%
Other Locations	52,633.00	17.4%	44,839.50	14.3%	39,246.00	22.7%	31,978.00	17.9%	27,122.50	118.7%
<b>TOTAL CREDIT</b>	<b>410,299.50</b>	<b>-7.6%</b>	<b>444,124.50</b>	<b>0.0%</b>	<b>444,143.00</b>	<b>-0.5%</b>	<b>446,207.50</b>	<b>1.2%</b>	<b>440,737.50</b>	<b>-4.0%</b>
Noncredit Total	56,852.00	-61.3%	146,796.50	11.2%	132,001.00	15.6%	114,194.10	2.3%	111,595.30	30.9%

**FTE**

*Full Time Equivalent.* One FTE is equal to 45 credit hours of credit instruction or 900 noncredit contact hours.

**FTE**

Location	2019-20		2018-19		2017-18		2016-2017		2015-16	
	FTE	% Change	FTE	% Change	FTE	% Change	FTE	% Change	FTE	% Change
Fort Omaha	1553.62	-13%	1,791.20	8.1%	1,656.61	38.7%	1,213.70	1.6%	1,194.09	-14.3%
South Omaha	1737.48	-22%	2,229.62	-8.9%	2,446.39	-12.1%	2,804.52	0.8%	2,782.48	-6.3%
Elkhorn Valley	1135.16	-14%	1,323.37	-3.1%	1,366.28	-12.4%	1,551.19	-0.5%	1,559.11	-5.3%
Sarpy	349.17	-25%	466.57	-11.1%	524.91	-18.5%	586.77	-8.9%	643.76	-11.4%
Fremont Area Center	70.43	-23%	92.04	5.5%	87.21	-34.7%	106.96	-20.0%	133.66	-24.8%
ATC	215.66	-6%	230.38	7.2%	214.98	-3.8%	240.28	7.5%	223.50	10.1%
WCC	0.00	N/A	0.00	N/A	0.00	-100.0%	0.00	-100.0%	2.28	-54.2%
MCC Express	0.00	N/A	0.00	N/A	0.00	-100.0%	0.00	-100.0%	2.60	N/A
Bellevue East/West/University	6.31	-1%	6.37	-32.7%	9.46	7.0%	7.57	-14.3%	8.83	-11.5%
Offutt	0.00	N/A	0.00	-100.0%	0.40	-81.8%	1.10	-50.0%	2.20	15.8%
Online	2880.32	5%	2,733.46	1.6%	2,691.48	2.0%	2,693.02	2.0%	2,638.94	-5.2%
Other Locations	1169.62	17%	996.43	14.3%	872.13	44.7%	710.62	17.9%	602.72	118.7%
<b>TOTAL CREDIT</b>	<b>9117.77</b>	<b>-8%</b>	<b>9,869.43</b>	<b>0.0%</b>	<b>9,869.84</b>	<b>0.8%</b>	<b>9,915.72</b>	<b>1.2%</b>	<b>9,794.17</b>	<b>-4.0%</b>
Noncredit	63.17	-61%	163.11	11.2%	146.67	18.3%	126.88	2.3%	123.99	30.9%
<b>GRAND TOTAL</b>	<b>9180.94</b>	<b>-8%</b>	<b>10,032.54</b>	<b>0.2%</b>	<b>10,016.51</b>	<b>1.0%</b>	<b>10,042.60</b>	<b>1.3%</b>	<b>9,918.16</b>	<b>-3.7%</b>

Metropolitan Community College  
2019/20 Annual Data Notebook

**Student Profile**

Average Age represents the collective average age of full- and part-time students for the term.

**AVERAGE STUDENT AGE**

Location	2019-20		2018-19		2017-18		2016-17		2015-16	
	Age	% Change	Age	% Change	Age	% Change	Age	% Change	Age	% Change
Fort Omaha	26.9	-2.9%	27.7	2.6%	27.0	-10.6%	28.2	-6.6%	30.2	4.5%
South Omaha	26.6	-1.5%	27.0	4.2%	25.9	-9.1%	27.0	-5.3%	28.5	4.4%
Elkhorn Valley	24.3	0.0%	24.3	2.1%	23.8	-10.9%	25.5	-4.5%	26.7	3.1%
Sarpy	24.2	-4.0%	25.2	4.1%	24.2	-11.4%	26.1	-4.4%	27.3	6.2%
Fremont Area Center	19.5	-5.3%	20.6	-4.2%	21.5	-10.8%	23.3	-3.3%	24.1	6.6%
ATC	27.3	-2.2%	27.9	8.1%	25.8	-12.2%	28.1	-4.4%	29.4	4.3%
WCC	0.0	N/A	0.0	0.0%	0.0	0.0%	0.0	0.0%	28.6	0.0%
Bellevue East/West/University	17.3	0.0%	17.3	0.0%	17.3	-3.9%	17.7	-1.7%	18.0	-34.1%
Ofutt	0.0	N/A	0.0	-100.0%	22.5	-17.3%	24.5	-9.9%	27.2	5.4%
Online	26.9	-0.7%	27.1	-1.1%	27.4	-6.2%	27.7	-5.1%	29.2	1.4%
Other Locations	20.3	3.6%	19.6	3.2%	19.0	-10.4%	20.2	-4.7%	21.2	1.9%
<b>AVERAGE STUDENT AGE</b>	25.4	-0.8%	25.6	0.4%	25.5	-8.6%	26.5	-5.0%	27.9	1.8%

**STUDENT GENDER**

Location	2019-20		2018-19		2017-18		2016-17		2015-16	
	% Male	% Female	% Male	% Female	% Male	% Female	% Male	% Female	% Male	% Female
Fort Omaha	54.5%	45.4%	52.9%	47.0%	40.7%	59.3%	40.7%	59.3%	39.9%	59.9%
South Omaha	45.2%	54.7%	46.1%	53.8%	52.4%	47.6%	52.4%	47.6%	52.0%	47.6%
Elkhorn Valley	43.6%	56.3%	45.1%	54.9%	48.2%	51.8%	48.2%	51.8%	47.9%	52.1%
Sarpy	48.4%	51.3%	48.6%	51.4%	47.6%	52.4%	47.6%	52.4%	45.6%	54.7%
Fremont Area Center	39.3%	53.4%	46.2%	53.8%	50.6%	49.4%	50.6%	49.4%	42.7%	56.8%
ATC	92.9%	6.8%	92.2%	7.7%	93.5%	6.5%	93.5%	6.5%	93.0%	6.6%
WCC	0%	0%	0.0%	0.0%	0.0%	0.0%	0.0%	0.0%	58.3%	41.7%
MCC Express	0%	0%	0.0%	0.0%	0.0%	0.0%	0.0%	0.0%	68.8%	38.5%
Bellevue East/West/University	43.2%	56.8%	49.1%	50.9%	33.3%	66.7%	33.3%	66.7%	31.5%	69.1%
Ofutt	0%	0%	0.0%	0.0%	70.0%	30.0%	70.0%	30.0%	16.7%	16.7%
Online	37.7%	62.3%	36.2%	63.7%	35.0%	65.0%	35.0%	65.0%	35.2%	64.9%
Other Locations	45.6%	53.1%	49.3%	50.2%	51.1%	48.9%	51.1%	48.9%	51.6%	48.8%
<b>GRAND TOTAL</b>	45.1%	54.6%	45.5%	54.4%	45.6%	54.4%	45.6%	54.4%	45.2%	54.6%

Percentages based on unduplicated headcount by term

STUDENT ETHNICITY

Location	Asian		Black or African American		White		Hispanic-Latino		American Indian-Alaskan Native	
	Count	%	Count	%	Count	%	Count	%	Count	%
Fort Omaha	311	3.6%	1,394	16.3%	3,367	39.3%	1,053	12.3%	38	1%
South Omaha	370	3.6%	976	9.5%	3,116	30.2%	1,969	19.1%	41	1%
Elkhorn Valley	152	2.5%	229	3.8%	3,134	51.4%	547	9.0%	15	0%
Sarpy	47	2.1%	76	3.4%	1,050	47.5%	171	7.7%	6	0%
Fremont Area Center	1	0.2%	2	0.3%	352	58.3%	87	14.4%	1	0%
ATC	13	1.5%	73	8.4%	567	65.2%	89	10.2%	0	0%
WCC	0	0.0%	0	0.0%	0	0.0%	0	0.0%	0	0%
MCC Express	0	0.0%	0	0.0%	0	0.0%	0	0.0%	0	0%
Bellevue East/West/University	0	0.0%	0	0.0%	31	54.4%	6	10.5%	0	0%
Offutt	0	0.0%	0	0.0%	0	0.0%	0	0.0%	0	0%
Online	434	3.0%	1,224	8.5%	8,945	62.0%	1,686	11.7%	57	1%
Other Locations	214	4.2%	467	9.2%	3,224	63.5%	699	13.8%	29	0%
<b>TOTAL CREDIT</b>	<b>1,542</b>	<b>3.2%</b>	<b>4,441</b>	<b>9.2%</b>	<b>23,786</b>	<b>49.3%</b>	<b>6,307</b>	<b>13.1%</b>	<b>187</b>	<b>2%</b>

Location	Native Hawaiian-Pacific Island		Two or More Races		Other Race/Ethnicities		Not Reported		Total	
	Count	%	Count	%	Count	%	Count	%	Total	Minority
Fort Omaha	3	0.0%	328	3.8%	0	0.0%	1,010	11.8%	7,504	3,127
South Omaha	12	0.1%	324	3.1%	3	0.0%	1,207	11.7%	8,018	3,692
Elkhorn Valley	5	0.1%	213	3.5%	1	0.0%	848	13.9%	5,144	1,161
Sarpy	6	0.3%	69	3.1%	0	0.0%	243	11.0%	1,668	375
Fremont Area Center	0	0.0%	10	1.7%	0	0.0%	28	4.6%	481	101
ATC	4	0.5%	17	2.0%	0	0.0%	100	11.5%	863	196
WCC	0	0.0%	0	0.0%	0	0.0%	0	0.0%	0	0
MCC Express	0	0.0%	0	0.0%	0	0.0%	0	0.0%	0	0
Bellevue East/West/University	0	0.0%	3	5.3%	0	0.0%	4	7.0%	44	9
Offutt	0	0.0%	0	0.0%	0	0.0%	0	0.0%	0	0
Online	20	0.1%	617	4.3%	2	0.0%	1,900	13.2%	14,885	4,038
Other Locations	8	0.2%	200	3.9%	3	0.1%	923	18.2%	5,767	1,617
<b>TOTAL CREDIT</b>	<b>58</b>	<b>0.1%</b>	<b>1,781</b>	<b>3.7%</b>	<b>9</b>	<b>0.0%</b>	<b>6,263</b>	<b>13.0%</b>	<b>44,374</b>	<b>14,316</b>

Percentages based on unduplicated headcount by term

Metropolitan Community College  
2019/20 Annual Data Notebook

Full-time/Part-time Student

Any student enrolled in 12 or more credit hours per quarter is considered a full-time student. A student enrolled in fewer than 12 credit hours is considered a part-time student.

CREDIT FULL-TIME/PART-TIME STATUS

Location	2019-20		2018-19		2017-18		2016-17		2015-16	
	%FT	%PT	%FT	%PT	%FT	%PT	%FT	%PT	%FT	%PT
Fort Omaha	33.5%	66.5%	30.3%	69.7%	31.0%	69.0%	48.9%	51.1%	46.9%	53.1%
South Omaha	36.9%	63.1%	35.5%	64.5%	37.3%	62.7%	49.7%	50.3%	49.2%	50.8%
Elkhorn Valley	40.3%	59.7%	36.7%	63.3%	39.7%	60.3%	52.8%	47.2%	52.6%	47.4%
Sarpy	27.2%	72.8%	29.5%	70.5%	30.8%	69.2%	48.3%	51.7%	45.6%	54.4%
Fremont Area Center	7.7%	92.3%	13.4%	86.6%	15.0%	85.0%	30.5%	69.5%	34.4%	65.6%
ATC	45.7%	54.3%	45.5%	54.5%	46.4%	53.6%	49.3%	50.7%	49.7%	50.3%
WCC	0%	0%	0%	0%	0%	0%	0%	0%	0%	100.0%
Bellevue East/West/University	0%	0%	0%	0%	0%	0%	3.2%	96.8%	15.4%	84.6%
Offutt	0%	0%	3.5%	96.5%	2.7%	97.3%	20.0%	80.0%	3.7%	96.3%
Online	0%	0%	25.4%	74.6%	0%	100.0%	41.9%	58.1%	11.1%	88.9%
Other Locations	28.0%	72.0%	26.6%	73.4%	26.3%	73.7%	25.7%	74.3%	40.9%	59.1%
<b>TOTAL CREDIT</b>	<b>33.4%</b>	<b>66.6%</b>	<b>30.4%</b>	<b>69.6%</b>	<b>23.9%</b>	<b>76.1%</b>	<b>45.5%</b>	<b>54.5%</b>	<b>31.8%</b>	<b>68.2%</b>

Percentages based on unduplicated headcount by term

2019-20 NEW AND RETURNING CREDIT STUDENTS BY TERM

Location	Summer		Fall		Winter		Spring	
	%New	%Return	%New	%Return	%New	%Return	%New	%Return
Fort Omaha	2.0%	98.0%	25.0%	75.0%	8.5%	91.5%	9.2%	90.8%
South Omaha	6.1%	93.9%	25.1%	74.9%	10.8%	89.2%	11.4%	88.6%
Elkhorn Valley	0.0%	100.0%	31.1%	68.9%	9.1%	90.9%	10.8%	89.2%
Sarpy	0.0%	100.0%	39.6%	60.4%	6.5%	93.5%	8.2%	91.8%
Fremont Area Center	0.0%	100.0%	60.8%	39.2%	34.6%	65.4%	20.8%	79.2%
ATC	0.0%	100.0%	30.4%	69.6%	7.2%	92.8%	10.9%	89.1%
WCC	0.0%	0%	0.0%	0%	0%	0%	0%	0%
MCC Express	0.0%	0%	0.0%	0%	0%	0%	0%	0%
Bellevue East/West/University	0.0%	0%	85.7%	14.3%	70.3%	29.7%	0%	0%
Offutt	0.0%	0%	0.0%	0%	0%	0%	0%	0%
Online	1.2%	98.8%	20.6%	79.4%	12.9%	87.1%	12.9%	87.1%
Other Locations	0.4%	99.6%	54.1%	45.9%	23.5%	76.5%	13.2%	86.8%

Metropolitan Community College  
2019/20 Annual Data Notebook

2019/20 AVERAGE CREDIT HOUR LOAD BY TERM

Location	Summer	Fall	Winter	Spring
Fort Omaha	6.7	8.2	8.0	7.8
South Omaha	6.9	8.3	8.2	8.0
Elkhorn Valley	6.5	8.5	8.2	8.0
Sarpy	5.5	7.3	7.0	6.6
Fremont Area Center	5.3	6.5	5.9	5.5
ATC	8.7	10.9	10.4	9.7
WCC	0.0	0.0	0.0	0.0
MCC Express	0.0	0.0	0.0	0.0
Bellevue East/West/University	0.0	4.8	4.6	0.0
Offutt	0.0	0.0	0.0	0.0
Online	6.8	7.1	7.1	7.1
Other Locations	4.9	9.8	7.8	5.1
<b>AVERAGE</b>	<b>8.0</b>	<b>9.9</b>	<b>9.3</b>	<b>9.3</b>