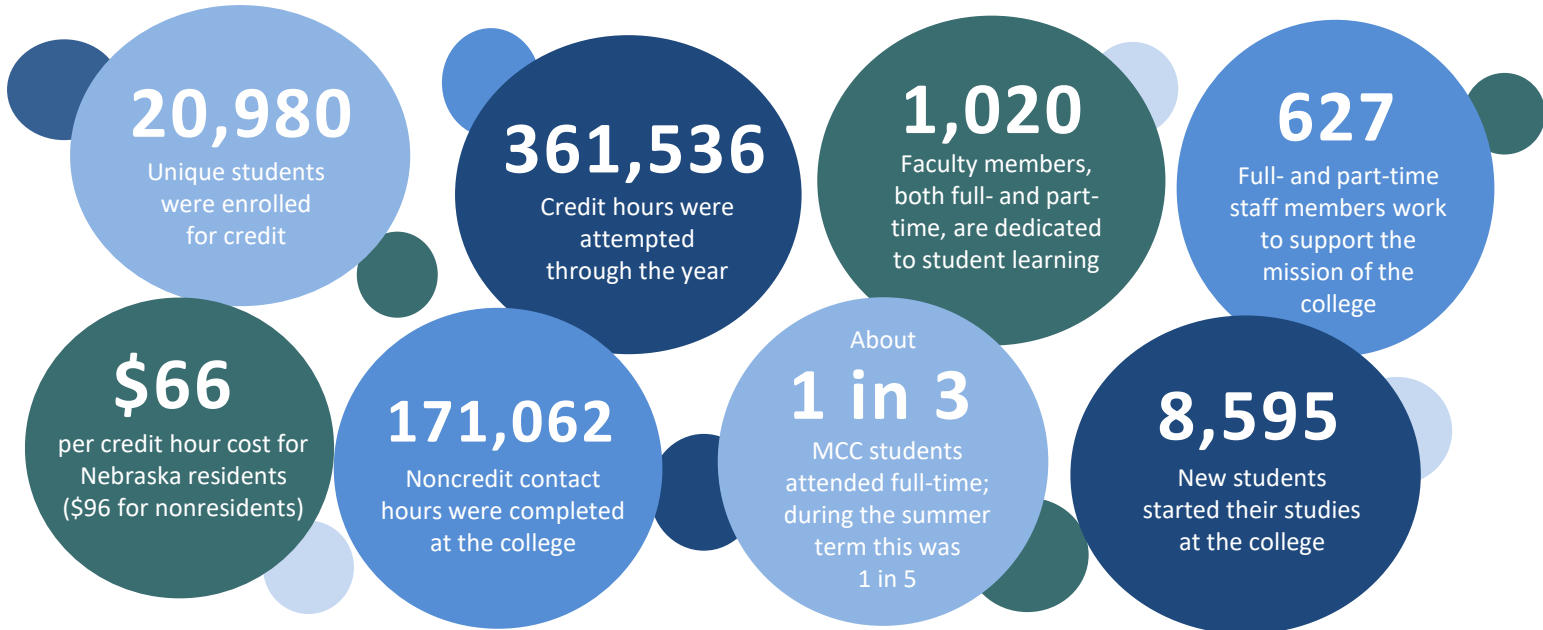


MCC Facts at a Glance:

A snapshot of annual data for the year 2021-22

Metropolitan Community College delivers relevant, student-centered education to a diverse community of learners in Douglas, Sarpy, Washington, and Dodge Counties in Nebraska. This year at MCC:



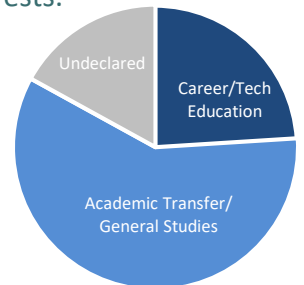
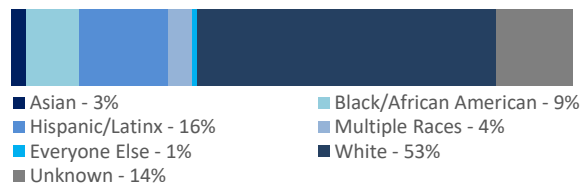
MCC students represent a diverse population of learners, with a broad range of backgrounds and educational and career interests.

24.7 is the average age of an MCC student; most were between 15 and 34.



54% Slightly more than half of MCC's students are female.

For MCC students, slightly more than **1 in 3** whose race or ethnicity is known identify as members of minority groups.



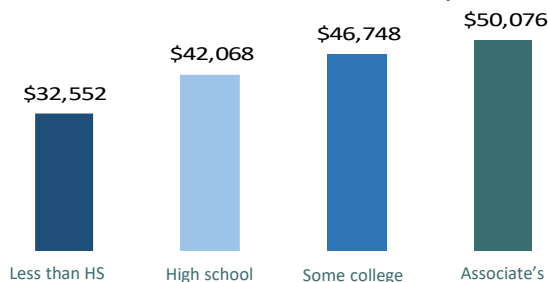
About 3 out of 5 (59%) of students were in academic transfer programs, While 24% were in career/technical programs; 17% were undeclared.

The long-term economic effect of completing a degree is unquestionable, and includes an impact on the students as well as the community.



1,717

Graduates received degrees at MCC in 2021-22



Graduates from MCC can expect their income to increase as a result of their degrees, as shown by the median full time annual earnings for those over age 25.



The difference in median income for associates degree holders versus high school graduates translates to more than

\$320,000

over a career span of 40 years.

Source for earnings data: "Education pays, 2021," Career Outlook, U.S. Bureau of Labor Statistics, May 2022

For information on campus locations, contact phone numbers, available programs of study, or other information please visit: www.mccneb.edu